



## HIGH WATER BARRIER - MEDIUM VAPOUR BARRIER

## Product Code: TSXHD

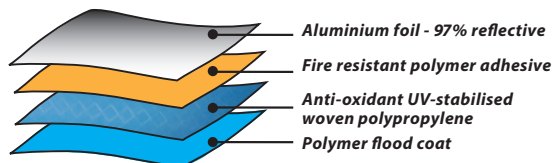
Trade Select™ SARKING is an Extra Heavy Duty radiant barrier, designed for multi-purpose use as both roof sarking and a wall wrap. It is suitable for use in all roof and wall types. The reflective foil side provides extra R-value when installed facing an air cavity, and the multi-layer structure provides superior strength, flexibility and durability. Classified as High Water Barrier, Medium Vapour Barrier, Trade Select™ SARKING acts as a barrier to radiant heat, moisture ingress, draughts and dust penetration.

- ✓ High Water Barrier
- ✓ 97% Reflective
- ✓ Superior heat resistance
- ✓ Medium Vapour Barrier
- ✓ High strength, light weight
- ✓ Low flammability

## Construction

Trade Select™ SARKING is a flexible four layer product made with a combination of anti-oxidant ultra-violet stabilised woven polypropylene, 97% reflective aluminium foil, and fire-resistant polymer adhesive, backed by a polymer flood coat. In order to minimise shrinkage after installation, our products are pre-shrunk during the manufacturing process.

Ametalin utilises Advanced Laminating Technology; the polymer adhesive remains tacky indefinitely and provides superior resistance to heat, fire and delamination.



## Application

Trade Select™ SARKING is designed for use as a roof sarking and wall wrap in residential, commercial and office buildings in all regions of Australia. Durability may be affected by environmental factors, including airborne pollutants, if used in industrial or farm buildings.

NOTE: High Water Barrier, Medium Vapour Barrier wall wraps are suitable for wet tropical climate zones.

## Tear Resistance

Trade Select™ SARKING is an extremely lightweight product with superior tear resistance. Trade Select™ SARKING is guaranteed to meet or exceed the minimum performance levels for Extra Heavy Duty rating required under AS/NZS 4200.1:2017.

	Minimum Value*	Actual Test Value
Machine direction edge tear resistance	90 N	517 N / 25 mm
Lateral direction edge tear resistance	90 N	480 N / 25 mm

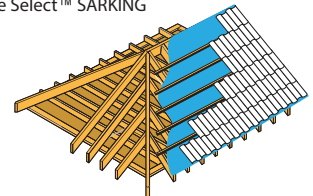
\* Minimum value required to qualify as Extra Heavy Duty under AS/NZS 4200.1:2017

## DECLARED TOTAL SYSTEM R-VALUES

The contribution of this product to the total R-value depends on installation and environmental conditions. The R-value will be reduced in the event of the accumulation of dust on upward facing surfaces and in those cavities that are ventilated.

## TILE ROOF / METAL ROOF

22° pitched tile roof or metal roof, unventilated attic, plasterboard ceiling, with one layer of Trade Select™ SARKING

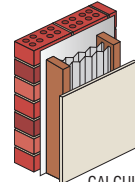


CALCULATION REF: Tile Roof 299r3234 / Metal Roof 299r37

WINTER  $R_T 1.0$  SUMMER  $R_T 1.5$

## BRICK VENEER WALL

with one layer of Trade Select™ SARKING + two layers of Trade Select™ PLEATED SILVERBATTS™

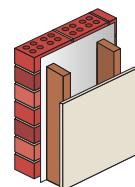


CALCULATION REF: 299w3225

WINTER  $R_T 3.4$  SUMMER  $R_T 3.0$

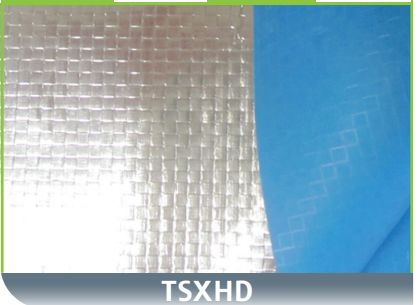
## BRICK VENEER WALL

with one layer of Trade Select™ SARKING



CALCULATION REF: 299w3221

WINTER  $R_T 1.3$  SUMMER  $R_T 1.2$



TSXHD

# Trade Select™ SARKING

EXTRA HEAVY DUTY

REFLECTIVE INSULATION MULTI-PURPOSE: ROOF SARKING | WALL WRAP

## Classification

Trade Select™ SARKING classifications in accordance with AS/NZS 4200.1:2017

PRODUCT		Trade Select™ SARKING	AS/NZS 4200.1:2017
FLAMMABILITY INDEX	AS 1530.2-1993	Low	Low ≤ 5
DUTY	AS/NZS 4200.1:2017	Extra Heavy	Classification
EMITTANCE	AS/NZS 4201.5:1994	0.03	Value
REFLECTIVITY		97% (ACTUAL)	Value
RESISTANCE TO WATER PENETRATION	AS/NZS 4201.4:1994	High	High
VAPOUR BARRIER	ASTM E96	Medium, PROCEDURE B, WET CUP TEST	Classification
MACHINE DIRECTION TENSILE STRENGTH	AS 1301.448s-91	15.9 kN/m	Min 13.0 kN/m
LATERAL DIRECTION TENSILE STRENGTH	AS 1301.448s-91	14.2 kN/m	Min 10.5 kN/m
MACHINE DIRECTION EDGE TEAR	TAPPI T 470 om-89	517 N	Min 90 N
LATERAL DIRECTION EDGE TEAR	TAPPI T 470 om-89	480 N	Min 90 N
RESISTANCE TO DRY DELAMINATION	AS/NZS 4201.1:1994	Pass	Pass
RESISTANCE TO WET DELAMINATION	AS/NZS 4201.2:1994	Pass	Pass
RESISTANCE TO IMPACT (SANDBAG)	AS 4040.4-2006	No Penetration	
SHRINKAGE (REPEATED WETTING & DRYING)	AS/NZS 4201.3:1994	< 0.0%	< 0.5%

WATER VAPOUR TRANSMISSION RATE: 2.6 g/m<sup>2</sup>·24hr (23°C, 50% RH)

AMETALIN CLASSIFICATION: MEDIUM VAPOUR BARRIER

## Vapour Barrier Properties

Trade Select™ SARKING has a Water Vapour Transmission (WVT) rate of 2.6 grams per square metre per 24 hours tested at 23°C, 50% Relative Humidity (RH). Vapour Resistance 46.70 MN·s/g. Ametalin classification is Medium Vapour Barrier.

## NCC Compliant

Trade Select™ SARKING complies with AS/NZS 4859.1:2002/Amdt 1:2006 and AS/NZS 4200.1:2017, and therefore meets all the requirements of the *National Construction Code* for insulation and pliable building membranes.

## BUSHFIRE ATTACK LEVELS

Trade Select™ SARKING complies with AS 3959-2009 *Construction of buildings in bushfire-prone areas* for use in roof systems BAL – LOW to BAL – 40 and wall systems BAL – LOW to BAL – FZ.

## Total System R-values

R-values apply to typical conditions for mainland Australian capital cities and have been calculated by an independent consulting engineer in accordance with AS/NZS 4859.1:2002/Amdt 1:2006. For detailed design of building systems, seek advice based on actual site conditions from a qualified licensed engineer.

## Reflectivity

Trade Select™ SARKING is made with aluminium foil laminates with reflectivity of 97% and emissivity of 0.03 to one side, in compliance with AS/NZS 4200.1.6.3.

## Storage

This product should be stored under cover in a clean, dry place in the pack provided.

## Dimensions

Trade Select™ SARKING is sold in sizes:

1200 mm x 60 m (72 m <sup>2</sup> )	
1350 mm x 60 m (81 m <sup>2</sup> )	1350 mm x 30 m (40.5 m <sup>2</sup> )
1500 mm x 60 m (90 m <sup>2</sup> )	1500 mm x 30 m (45 m <sup>2</sup> )

## Specification Notes

When specifying, state the following:

**Product Name:** Trade Select™ SARKING

The insulation to be installed shall be Trade Select™ SARKING single-sided reflective laminate, emittance bright side 0.03. Product is manufactured by Ametalin and shall be installed in accordance with AS/NZS 4200.2: 2017 *Pliable Building Membranes and Underlays, Part 2: Installation Requirements*.

Emittance Bright Side: 0.03

Water Vapour Transmission (WVT): 2.6 g/m<sup>2</sup>·24hr

Vapour Resistance: 46.70 MN·s/g

Vapour Barrier Classification: Medium

Water Barrier Classification: High

Duty: Extra Heavy in accordance with AS/NZS 4200.1:2017

© 2018 Ametalin All Rights Reserved. Ametalin is a division of Amalgamated Metal Industries Pty. Ltd. Product information in this publication and otherwise supplied to users is based on our general experience and is given in good faith, but due to factors outside our knowledge and control which may affect the use of products, no warranty is given or implied with respect to this information or the product itself regarding the suitability of the product for any particular purpose. The usage of this and other building membranes will affect moisture migration in the building element. The purchaser should independently determine the suitability of the product for the intended purpose. For large projects with complex air-conditioning and condensation issues, designers may wish to contact our technical department. Batch number is printed on product. Product colour may vary from batch to batch. Amalgamated Metal Industries Pty. Ltd. reserves the right to amend product specifications without prior notice. Information provided is considered to be true and correct at the time of publication. DTE-43314-11

Distributed by:

**NSW / VIC / TAS - RM INDUSTRIES**  
PO Box 8062, Carrum Downs VIC 3201  
PO box 1011 Stanhope Gardens NSW 2768  
Email: info@rmindustries.com.au

Phone: **03 9786 8449**  
**www.rmindustries.com.au**

**SA / WA / NT - REFLEX INSULATION**  
PO Box 77, Salisbury South BC SA 5106  
SA Warehouse: Watervale Drive, Green Fields SA 5107  
WA Warehouse: Kurnall Rd, Welshpool WA 6106  
Email: info@reflexinsulation.com.au

Phone: **1300 720 185**  
**www.reflexinsulation.com.au**

**QLD - AUSTRALIAN REFLECTIVE INSULATION**  
51 Hawthorn Rd  
Burpengary QLD 4505  
Fax: (07) 3102 0501  
Email: sales@australianreflectiveinsulation.com.au

Phone: **1300 37 38 39**  
**www.australianreflectiveinsulation.com.au**

# Trade Select™ SARKING

EXTRA HEAVY DUTY

REFLECTIVE INSULATION | MULTI-PURPOSE: ROOF SARKING | WALL WRAP

## Health and Safety Information

Ametalin has assessed Trade Select™ SARKING according to the criteria outlined in the *National Occupational Health and Safety Commission (NOHSC):1008 (1998)* and *NOHSC: 1005 (1999)*. As a result of the assessment, this product is classified as non-hazardous according to the NOHSC criteria. To reduce risk of UV damage when installing this product, wear protective clothing, safety glasses and sunscreen, and work in the shade wherever practical.

## Installation

### ELECTRICAL SAFETY PRECAUTIONS - BEFORE YOU START:

**Ametalin stresses the importance of safe installation practices for foil-based insulation as critical to installer and consumer safety. Aluminium Foil Insulation Association Inc. (AFIA) has prepared Work Method Statements and Hazard Management forms to assist contractors and installers in safe installation of reflective insulation products. These documents are available under 2009 AFIA WMS & Hazard Management, at [www.afia.com.au/news/health-and-safety/](http://www.afia.com.au/news/health-and-safety/).**

Trade Select™ SARKING should be installed in accordance with *AS 4200.2: 2017 Pliable Building Membranes and Underlays, Part 2: Installation Requirements*.

### GENERAL

Trade Select™ SARKING is not designed to withstand prolonged direct exposure to the elements. Accordingly, the outer construction envelope should be installed without delay. Aluminium foil should not come into contact with wet concrete or mortar, as the aluminium is susceptible to alkali corrosion. If installed within 500 metres of the sea, or in a non-residential building where foil surfaces may be exposed to a corrosive atmosphere (including agricultural sheds), foil surfaces should face an enclosed, un-vented air space.

### ROOFS

In roofs, Trade Select™ SARKING is to be installed as a continuous membrane, blue anti-glare side facing out and laid loosely over rafters with a minimum drape of  $\leq 40$  mm. For larger rafter spacings in metal roofs, the drape should be increased proportionally. Joins must be overlapped by no less than 150 mm with all top layers to the outside of bottom layers to facilitate drainage. In purlin construction, end rolls must be overlapped by 600 mm.

When Trade Select™ SARKING is used under tiles it must be installed under battens in order to comply with *AS 4200.1:2017*. Under metal roofing the preferred installation is also under the battens. Trade Select™ SARKING can be installed above the battens, but performance may be reduced and problems may arise under certain environmental conditions. Specifically, condensation forming under the roof may pool behind battens due to a breach in the integrity of the Trade Select™ SARKING membrane; condensation may also form on the underside of Trade Select™ SARKING where contact is made with the roofing material. Adequate slack in the material must be provided, equal to the specified sag, to accommodate shrinkage of Trade Select™ SARKING due to high temperatures in close proximity to the metal roofing.

### FRAMED WALLS & GABLES

In framed walls and gables, Trade Select™ SARKING should be installed horizontally as a continuous membrane by fixing to all framing members with the blue side facing out. Trade Select™ SARKING should extend from top plate to the bottom plate on

concrete slabs or bearers in timber construction. For fastening to timber construction, fixings are to be no more than 150 mm apart and should be galvanised clouts or staples, prior to fixing cladding. For fastening to steel constructions, tech screws at 300 mm centres for cavity walls or Ametalin Double Sided Insulation Fixing Tape for direct to stud fastening prior to fixing cladding. In high wind areas it is recommended to install using flat punched multi-point fasteners or cap screws. Horizontal, vertical and end overlaps must be 150 mm if not taped or 50 mm taped with Ametalin Insulation/Ducting Tape, with all top layers to the outside of bottom layers to prevent water ingress. All end laps are to be fixed to a stud to form a continuous membrane. Any damage made to Trade Select™ SARKING during installation including holes and tears must be repaired to restore the integrity of the membrane.

Where Trade Select™ SARKING is intended to act as an air or vapour control, tape and seal all overlapped joins, penetrations and discontinuities with Ametalin Insulation/Ducting tape to prevent air movement. When Trade Select™ SARKING is installed as a water control membrane ensure slope is no less than 2° and all penetrations shall be sealed or turned up to facilitate drainage around penetration. Ensure window and door openings are cut neatly, dressed carefully and are properly fitted at flashing points. Where Trade Select™ SARKING is installed as a thermal control membrane, ensure airgaps to both low emittance foil sides are  $\geq 20$  mm.

### DOUBLE BRICK AND MASONRY CAVITY WALLS

After the inner leaf of the double brick or masonry cavity wall is laid, place Ametalin Cavity Spacers™ onto the brick ties via the vertical slit provided, with the white adhesive side facing outwards. Install one cavity spacer per square metre to ensure the required air space. Remove adhesive tape backing. Install Trade Select™ SARKING horizontally, neatly cut slits through the pliable building membrane at all lining clips or brick tie positions, place Trade Select™ SARKING into position over the brick ties. Push the membrane and the cavity spacer into position against the inner back leaf. When Trade Select™ SARKING is in position and taped if required, the final leaf of brickwork can be constructed. Ensure mortar is not allowed to contaminate the foil surfaces.

© 2018 Ametalin All Rights Reserved. Ametalin is a division of Amalgamated Metal Industries Pty. Ltd. Product information in this publication and otherwise supplied to users is based on our general experience and is given in good faith, but due to factors outside our knowledge and control which may affect the use of products, no warranty is given or implied with respect to the information or the product itself regarding the suitability of the product for any particular purpose. The usage of this and other building membranes will affect moisture migration in the building element. The purchaser should independently determine the suitability of the product for the intended purpose. For large projects with complex air-conditioning and condensation issues, designers may wish to contact our technical department. Batch number is printed on product. Product colour may vary from batch to batch. Amalgamated Metal Industries Pty. Ltd. reserves the right to amend product specifications without prior notice. Information provided is considered to be true and correct at the time of publication. DTE-43314-11

Distributed by:

**NSW / VIC / TAS - RM INDUSTRIES**  
PO Box 8062, Carrum Downs VIC 3201  
PO box 1011 Stanhope Gardens NSW 2768  
Email: [info@rmindustries.com.au](mailto:info@rmindustries.com.au)

Phone: **03 9786 8449**  
**[www.rmindustries.com.au](http://www.rmindustries.com.au)**

**SA / WA / NT - REFLEX INSULATION**  
PO Box 77, Salisbury South BC SA 5106  
SA Warehouse: Watervale Drive, Green Fields SA 5107  
WA Warehouse: Kurnall Rd, Welshpool WA 6106  
Email: [info@reflexinsulation.com.au](mailto:info@reflexinsulation.com.au)

Phone: **1300 720 185**  
**[www.reflexinsulation.com.au](http://www.reflexinsulation.com.au)**

**QLD - AUSTRALIAN REFLECTIVE INSULATION**  
51 Hawthorn Rd  
Burpengary QLD 4505  
Fax: (07) 3102 0501  
Email: [sales@australianreflectiveinsulation.com.au](mailto:sales@australianreflectiveinsulation.com.au)

Phone: **1300 37 38 39**  
**[www.australianreflectiveinsulation.com.au](http://www.australianreflectiveinsulation.com.au)**